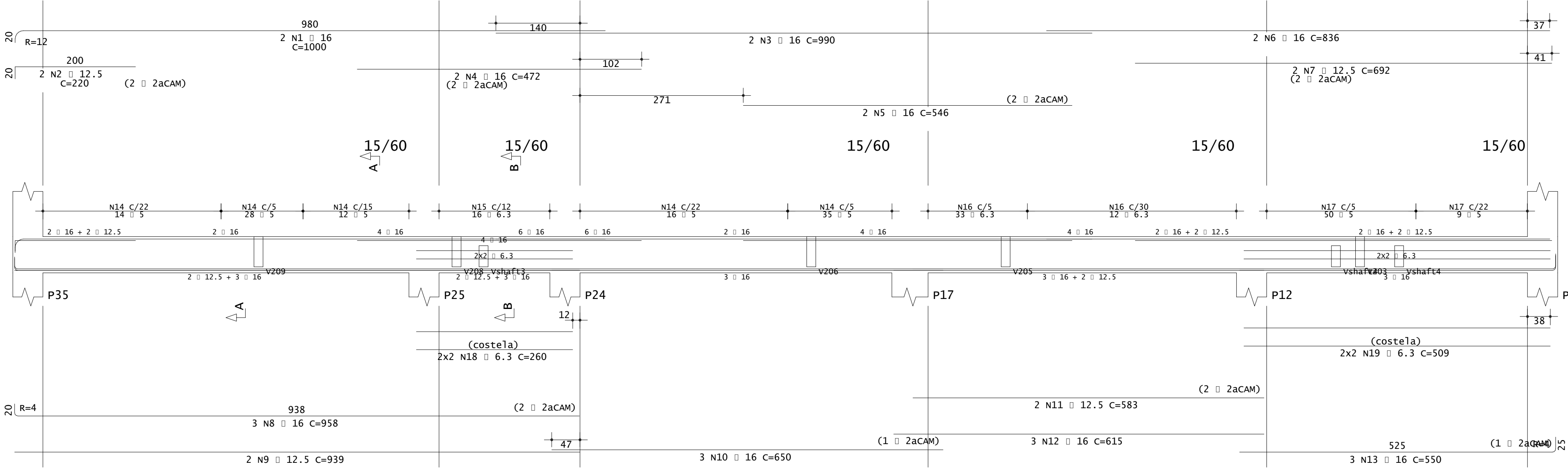
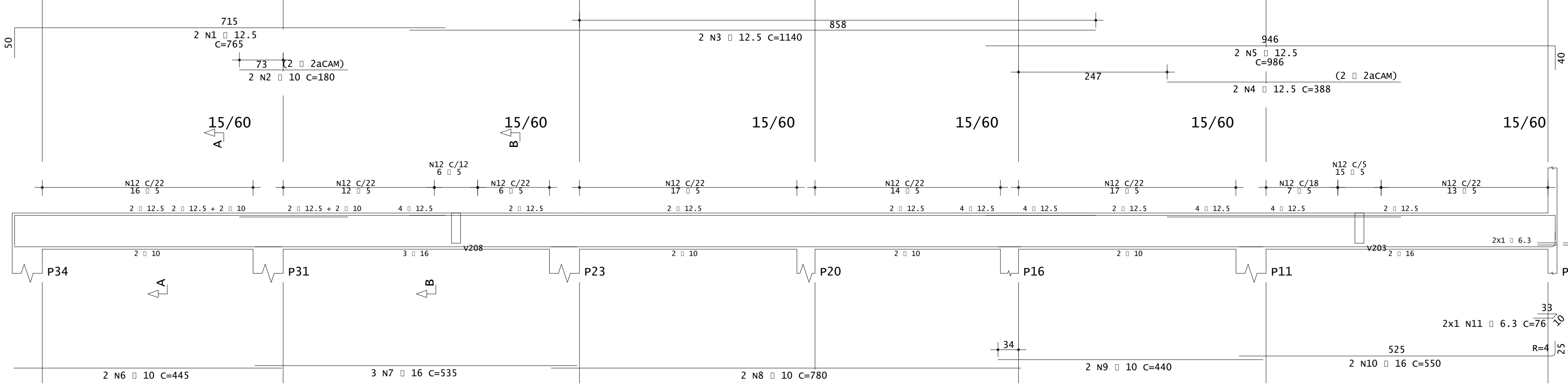


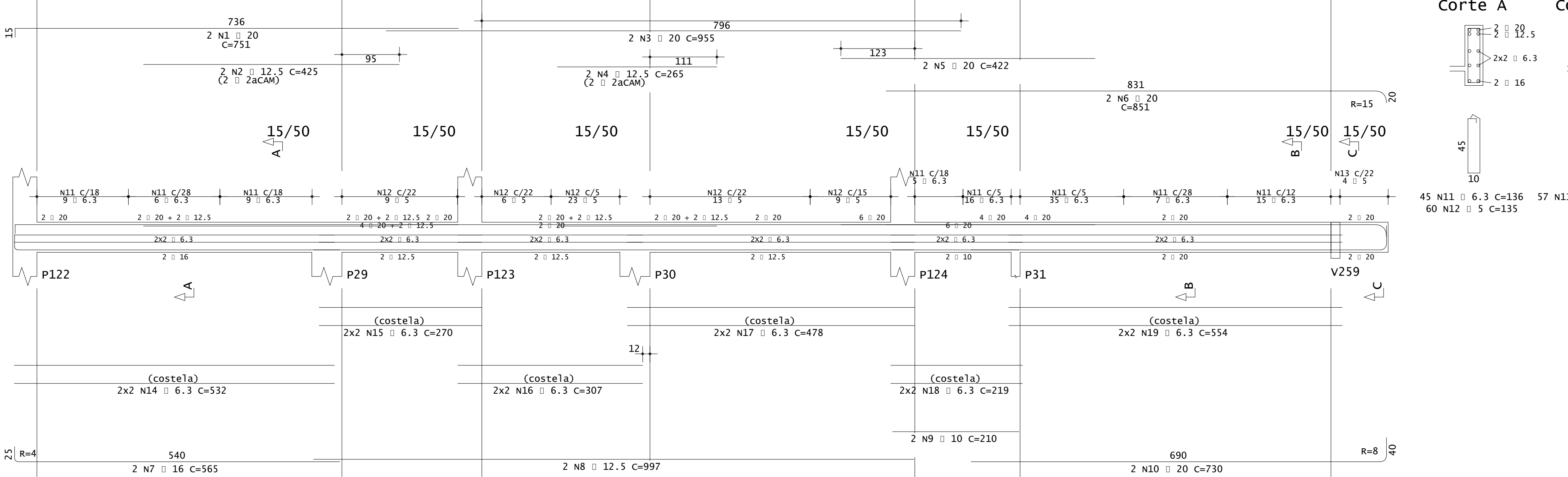
V259



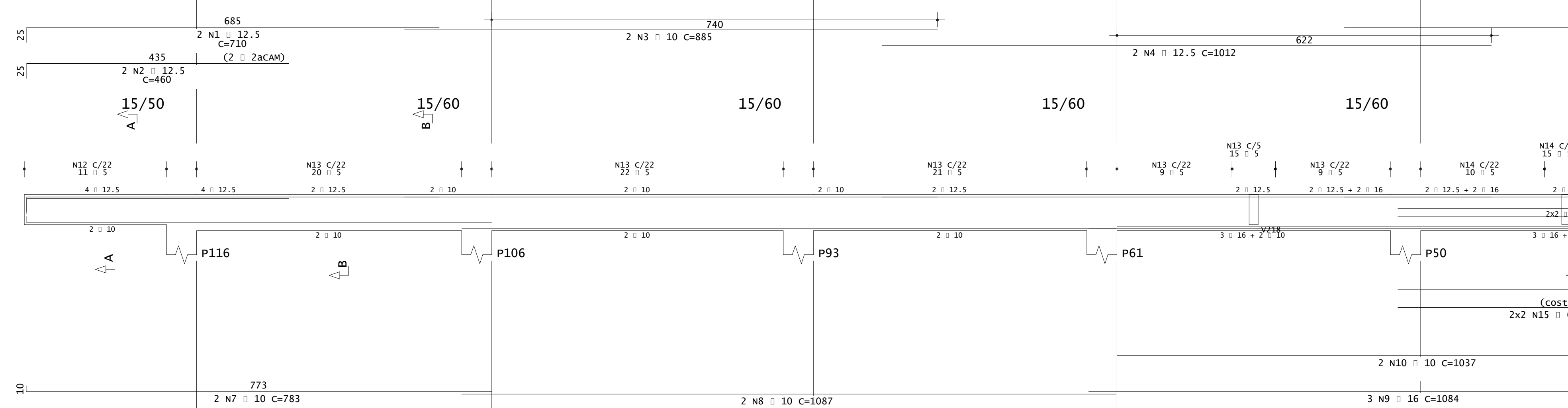
V256



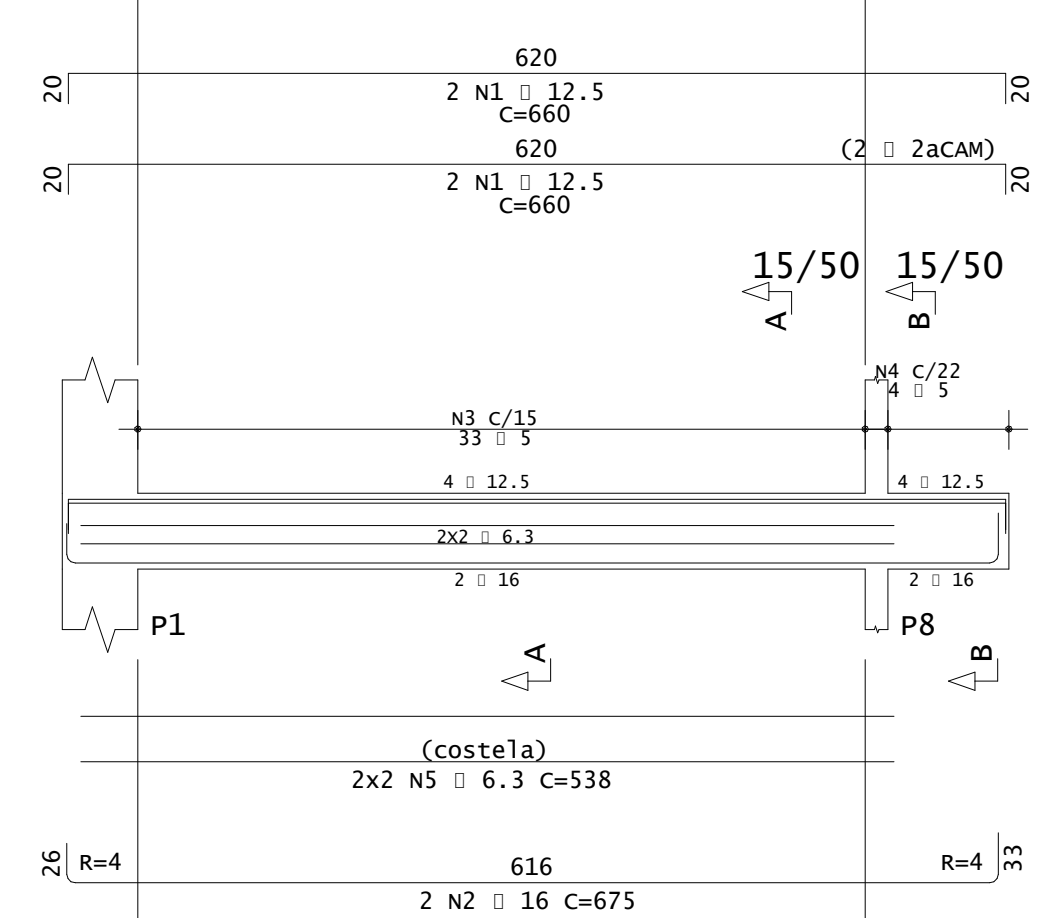
V209



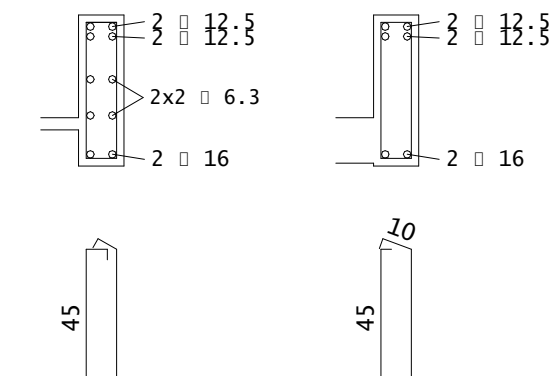
V258



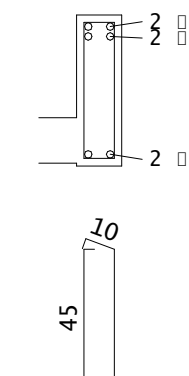
V202



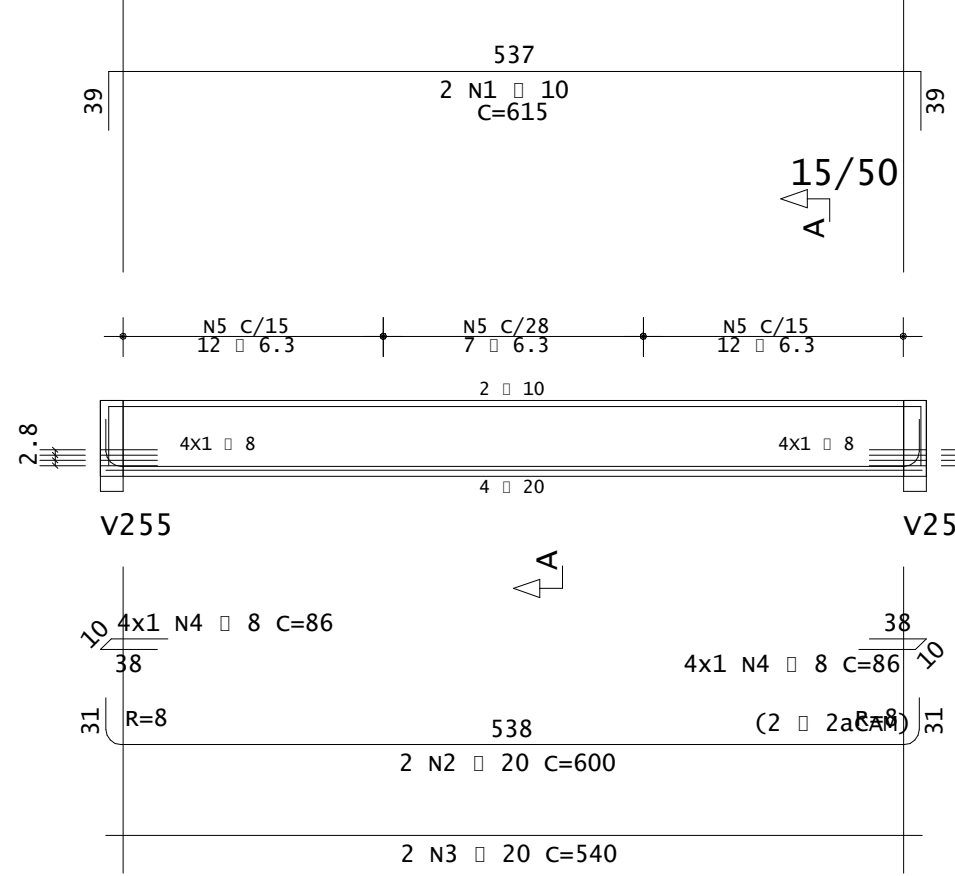
Corte A



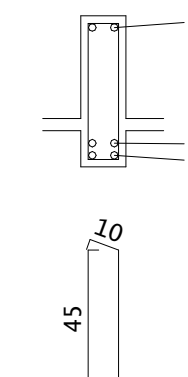
Corte B



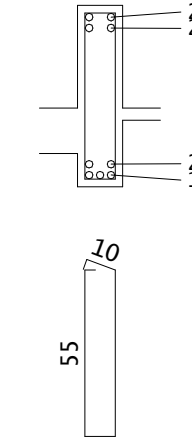
V218



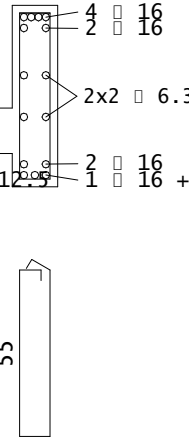
Corte A



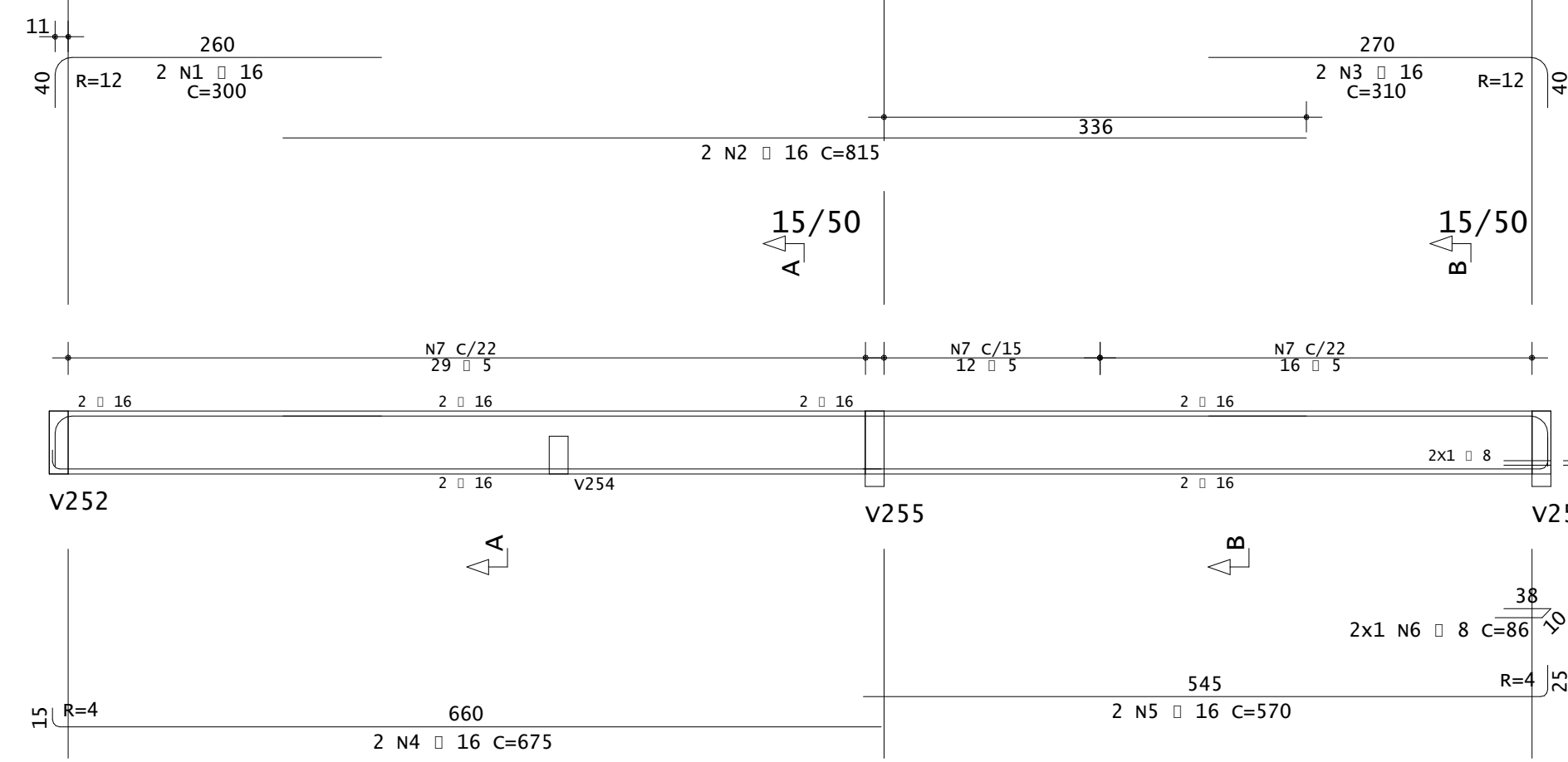
Corte A



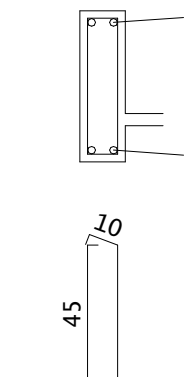
Corte B



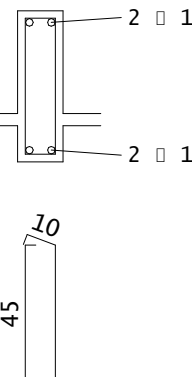
V212



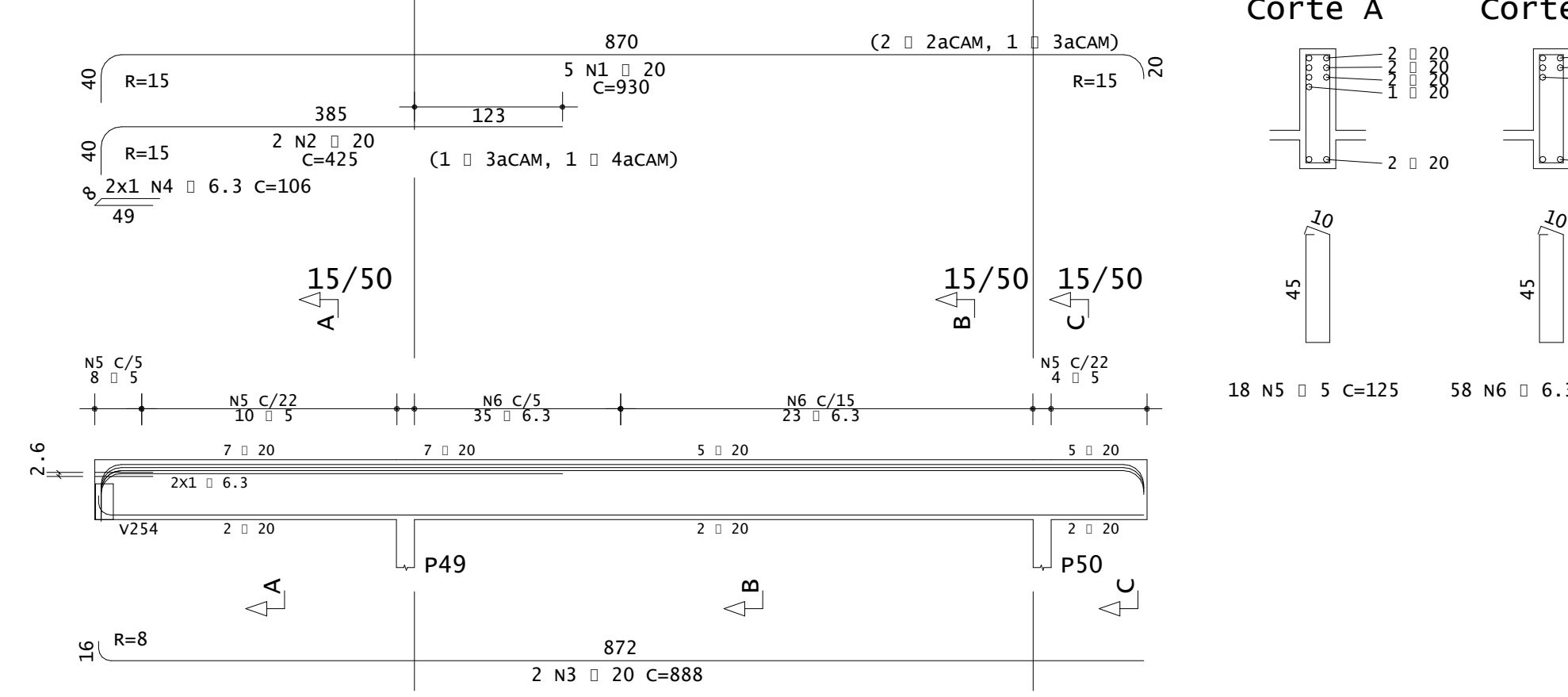
Corte A



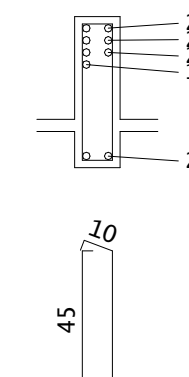
Corte B



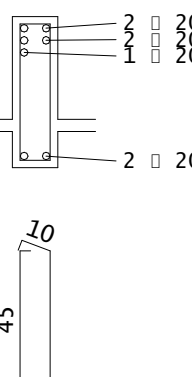
V217



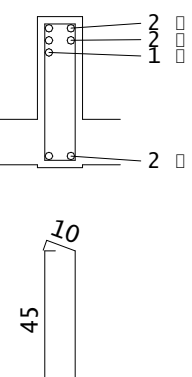
Corte A



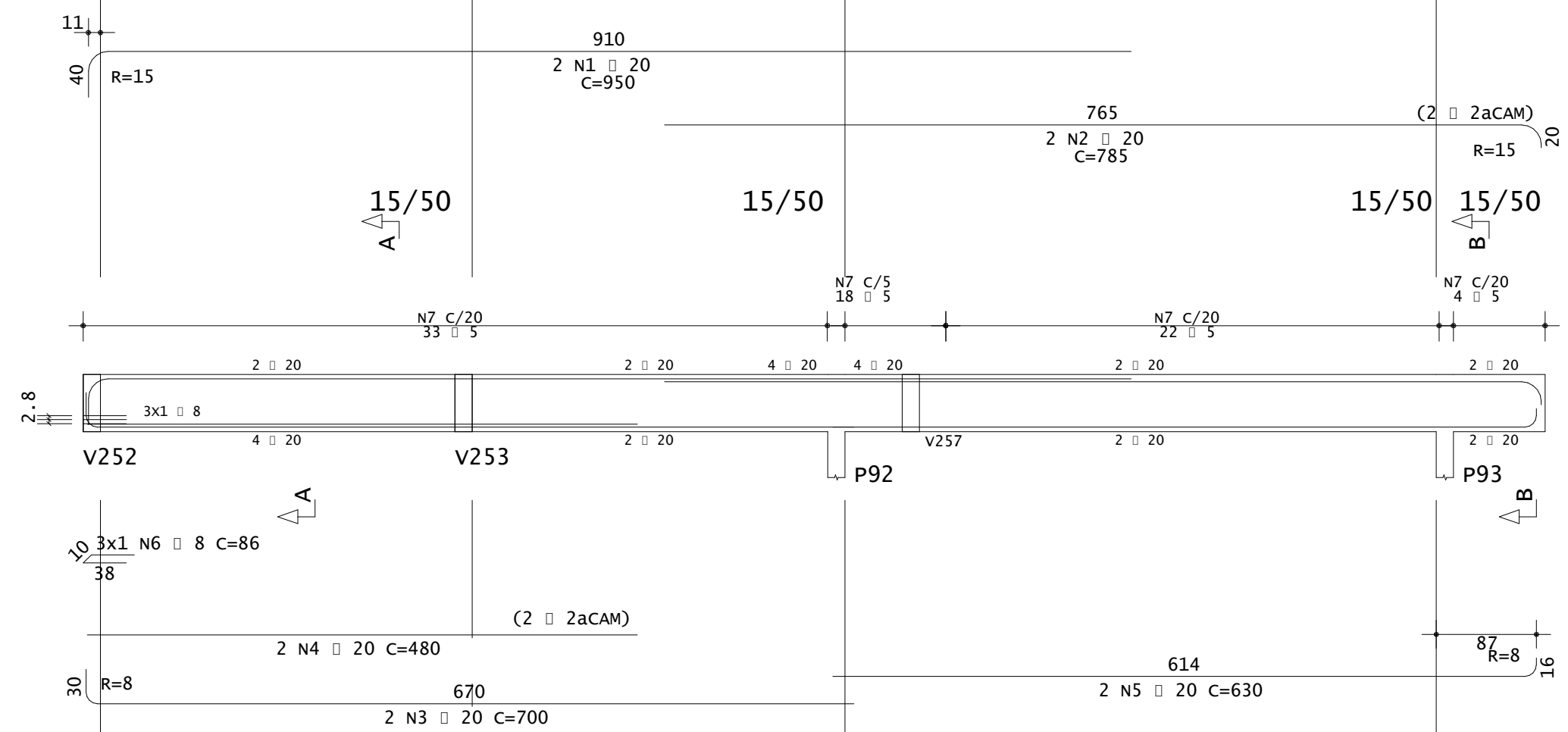
Corte B



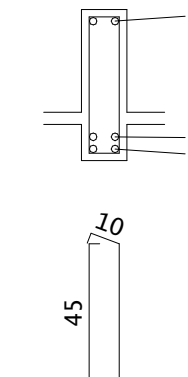
Corte C



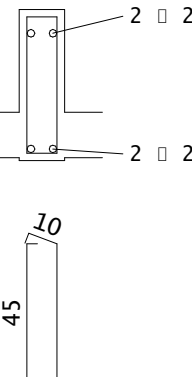
V225



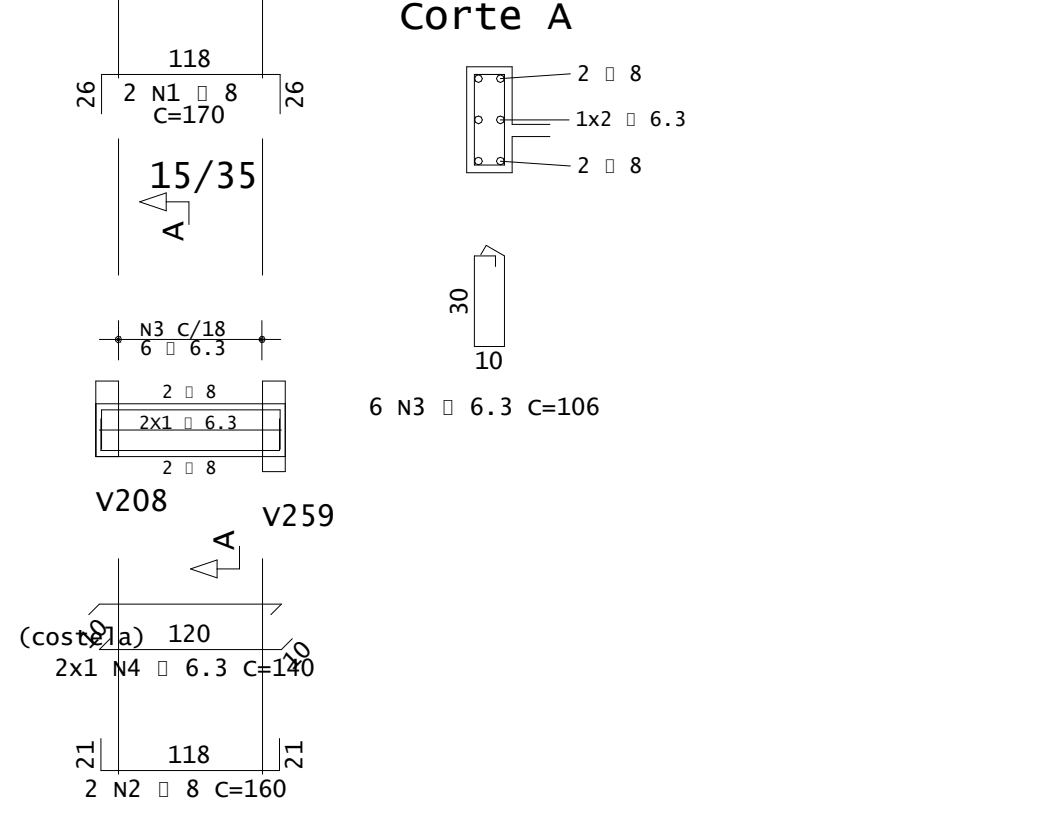
Corte A



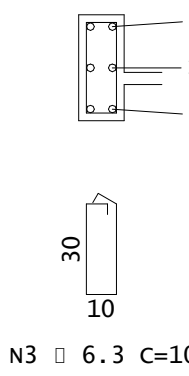
Corte B



Vshaft4



Corte A



ACO	POS	BIT	QUANT	UNIT	COMPRIMENTO	TOTAL
mm	cm	cm				
V202						
50A	1	12.5	4	660	2640	
50A	2	12.5	4	675	2700	
60A	3	15	33	135	4650	
60A	4	5	4	125	500	
50A	5	6.3	3	58	1740	
V209						
50A	1	20	2	751	1502	
50A	2	12.5	2	425	850	
50A	3	12.5	2	955	1910	
50A	4	12.5	2	265	530	
50A	5	20	2	422	844	
50A	6	20	2	851	1702	
50A	7	12.5	2	565	1130	
50A	8	12.5	2	997	1994	
50A	9	10	2	210	420	
50A	10	10	2	730	1460	
50A	11	6.3	102	136	13872	
50A	12	6.3	60	133	8000	
60A	13	5	4	125	500	
50A	14	6.3	4	532	2128	
50A	15	6.3	4	270	1080	
50A	16	6.3	4	307	1228	
50A	17	6.3	4	478	1912	
50A	18	6.3	4	219	876	
50A	19	6.3	4	554	2216	
V212						
50A	1	15	2	300	600	
50A	2	16	2	815	1630	
50A	3	16	2	310	620	
50A	4	16	2	675	1350	
50A	5	16	2	570	1140	
50A	6	8	2	86	172	
60A	7	5	57	125	7125	
V217						
50A	1	20	5	930	4650	
50A	2	20	2	425	850	
50A	3	20	2	885	1770	
50A	4	6.3	2	106	212	
60A	5	5	22	125	2750	
50A	6	6.3	58	126	7308	
V218						
50A	1	10	2	615	1230	
50A	2	20	2	600	1200	
50A	3	20	2	540	1080	
50A	4	8	8	86	688	
50A	5	8	8	86	688	
50A	6	6.3	31	126	3906	
V225						
50A	1	20	2	950	1900	
50A	2	20	2	785	1570	
50A	3	20	2	700	1400	
50A	4	20	2	480	960	
50A	5	20	2	630	1260	
50A	6	8	3	86	258	
60A	7	5	77	125	9625	
V256						
50A	1	12.5	2	765	1530	
50A	2	10	2	180	360	
50A	3	12.5	2	1140	2280	
50A	4	12.5	2	388	776	
50A	5	12.5	2	986	1972	
50A	6	10	2	445	890	
50A	7	16	3	535	1070	
50A	8	10	2	780	1560	
50A	9	10	2	780	1560	
50A	10	16	2	550	1100	
50A	11	6.3	5	125	625	
50A	12	5	123	145	17835	
V258						
50A	1	12.5	2	710	1420	
50A	2	12.5	2	460	920	
50A	3	10	2	885	1770	
50A	4	12.5	2	1012	2024	
50A	5	16	3	1140	2280	
50A	6	12.5	2	664	1328	
50A	7	10	2	783	1566	
50A	8	10	2	1087	2174	
50A	9	16	3	1084	2168	
50A	10	10	2	1037	2074	
50A	11	12.5	2	555	1110	
60A	12	5	35	135	1425	
60A	13	5	118	145	17110	
60A	14	5	35	135	1425	
50A	15	6.3	4	560	2240	
V259						
50A	1	16	2	1000	2000	
50A	2	12.5	2	220	440	
50A	3	16	2	990	1980	
50A	4	16	2	472	944	
50A	5	16	2	546	1092	
50A	6	16	2	836	1672	
50A	7	12.5	2	692	1384	
50A	8	16	3	958	1916	
50A	9	12.5	2	939	1878	
50A	10	16	3	1087	2174	
50A	11	12.5	2	583	1166	
50A	12	16	3	615	1230	
50A	13	16	3	550	1100	
60A	14	5	105	145	15125	
50A	15	6.3	16	156	2496	
50A	16	6.3	45	146	6570	
50A	17	5	59	155	9145	
60A	18	6.3	4	260	1040	
60A	19	6.3	4	599	2396	
Vshaft4						
50A	1	8	2	170	340	
50A	2	8	2	160	320	
50A	3	6	6	106	636	
50A	4	6.3	2	140	280	

RESUMO DE AÇO			
ACO	BIT	COMPR	PESO
mm	mm	mm	kgf
60A	5	992	153
50A	6.3	523	128
50A	8	18	7
50A	10	129	80
50A	12.5	242	233
50A	16	321	506
50A	20	241	593
Peso Total =			153 kgf
Peso Total =			1548 kgf

R00	EMISSION INICIAL	06/11/2023	JOSÉ ANTONIO VENTURA
Nº	DESCRIÇÃO	DATA	EMITIDO POR
TABELA DE REVISÃO			
PROPRIETÁRIO: PREFEITURA MUNICIPAL DE SAQUAREMA - RJ R. CEL. MADUREIRA, 77 - CENTRO, SAQUAREMA - RJ, 28990-000			
CRIA: ESCOLA E CRECHE MUNICIPAL VILATUR			
EMPENHO: R. PRAIA DA MARANDUBA - VILATUR, SAQUAREMA - RJ, 28990-000			
RESPONSÁVEL TÉCNICO		QrCode	
CONTEÚDO DETAHES DAS VIGAS - COBERTURA		FOLHA	
ESCALA INDICADA		PROJETISTA RODRIGO ROZA	
DATA 06/11/2023		ARQUIVO BE-FMSG-DES-EST-VILATUR-EX-032-R00	
		032	
		048	